

ReversingLabs vs VirusTotal

Why Choose ReversingLabs

ReversingLabs provides a more powerful, cost-effective, and private alternative to VirusTotal's public malware analysis tool. Our customers get access to the most accurate, up-to-date reputation data and context-rich file and network intelligence, backed by the world's largest, continually curated repository of malware and goodware.

Security teams get everything they need to defend against advanced malware threats, while cutting down on time and costs associated with investigations, threat hunting, and incident response efforts.

Our proven track record and expertise is why more than 60 of the leading cybersecurity providers trust ReversingLabs for their threat intelligence needs.

Highlights

- Authoritative file and URL reputation data trusted by 60+ security providers
- Access to the world's largest repository of malware and goodware
- Static analysis and dynamic analysis, including interactive sandbox
- Easy integration into existing security stack and workflows
- Highest levels of privacy, by default, at no additional cost
- Enterprise-level support when you need it — without upselling
- Flexible, scalable solution options with transparent, predictable pricing

Capabilities Comparison

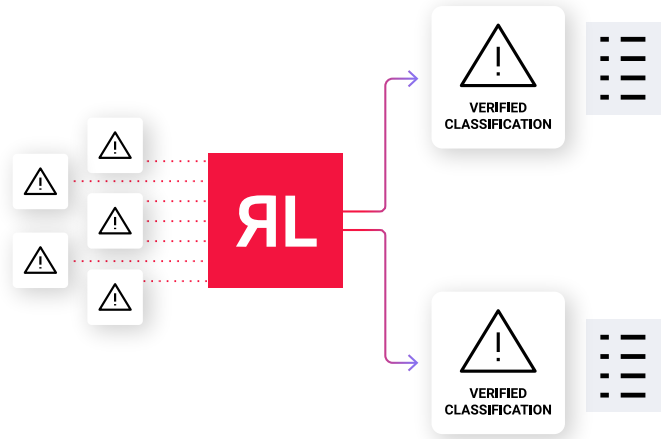
Key Differentiators	 REVERSINGLABS	VirusTotal
File Repository Size	422B+ files	50B files
Files Analyzed Per Day	20M	2M
File Types Supported	4800	~150
Max File Size Processed	2GB / 10GB / 100GB*	650MB
Final, Verified File & URL Threat Verdicts	Yes	No
Full Binary Analysis of Large, Complex Objects (including ISOs, CABs, installers, LLMs, VMDKs, and more)	Yes	No
Delete Uploaded Files	Yes	No
Historical Data Available for Search	Full repository dating back 16 years	Limitations beyond 1 year**
YARA Retro-Hunt File Size Limit	2GB	100MB
Privacy by Default	Yes	No
In-House Research Team	Yes	No
Live, Hands-On Customer Support	Yes	No

* 2GB supported with [Spectra Intelligence](#), 10GB with [Spectra Analyze](#), 100GB with [Spectra Detect](#)

** The ability to search beyond one year in VirusTotal is highly dependent on the search type and your subscription level.

Fast, Definitive Threat Verdicts

RL delivers definitive threat verdicts – in seconds – backed by clear context and the “why” behind every classification, so SOC teams can eliminate guesswork and time wasted on false positives.

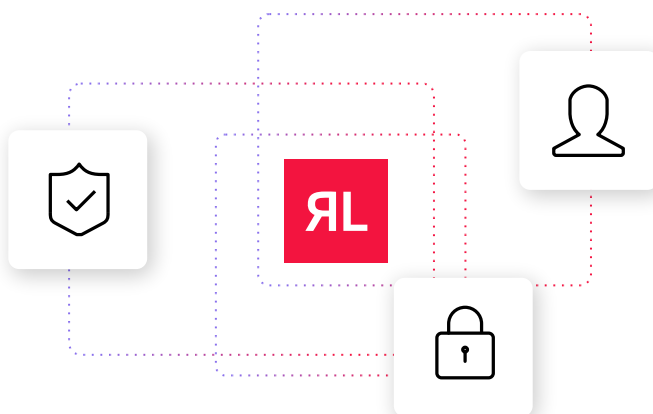
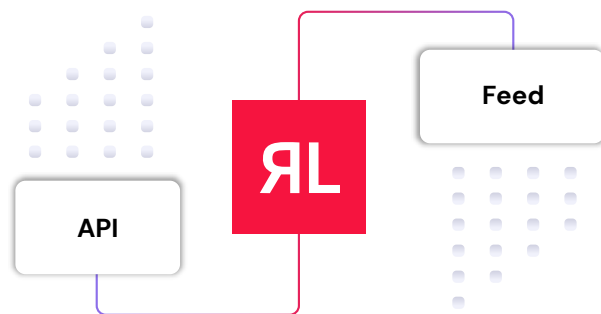


Unmatched File Coverage

RL provides access to the industry’s largest, most trusted repository of malware and goodware, with over 422 billion validated samples, support for over 4800 file types, and the ability to analyze multi-gigabyte, multi-layered objects to uncover threats at the deepest levels.

Seamless Integration

RL’s high-fidelity file and network threat intelligence can be easily integrated into existing security tools and workflows via a flexible REST API and built-in connectors with leading SIEM/SOAR, TIP, and EDR platforms.

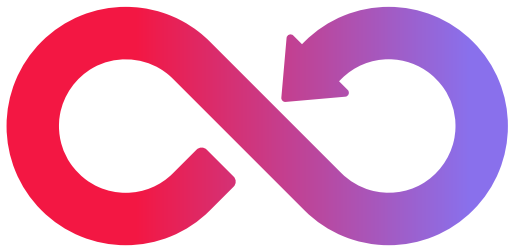
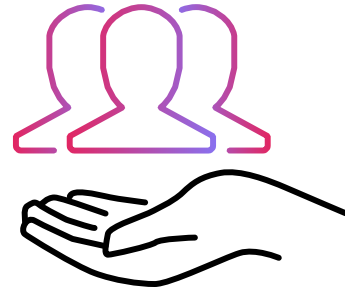


Privacy by Default

RL’s threat repository and portfolio of solutions are built based on privacy and compliance by default, ensuring sensitive and confidential data remains safe from prying eyes - at no extra cost.

Enterprise-Class Support

RL provides live, hands-on support, backed by dedicated engineers and customer success teams to ensure issues get resolved fast and correctly, without the upsell of “premium” services.



Flexible Solution Options

RL provides the flexibility to start small and cost-effectively scale. From individual APIs and feeds, to tailored bundles, to a full-fledged malware analysis and threat hunting workbench, organizations get solution options to meet specific needs and budgets.

Get Started!

See Why Companies are Making the Switch to ReversingLabs

[REQUEST A FREE TRIAL](#)

reversinglabs.com

About ReversingLabs

ReversingLabs is the trusted name in file and software security. We provide the modern cybersecurity platform to verify and deliver safe binaries. Trusted by the Fortune 500 and leading cybersecurity vendors, RL Spectra Core powers the software supply chain and file security insights, tracking over 422 billion searchable files with the ability to deconstruct full software binaries in seconds to minutes. Only ReversingLabs provides that final exam to determine whether a single file or full software binary presents a risk to your organization and your customers.